

# CLEANATLANTIC CONFERENCE

*Vigo, 21st June*

*09.00 – 16.30 h  
(UTC+2h00, Madrid, Bruselas)*

## Relationship between meteorological situations and the marine litter distribution using computational technics

Silvia Allen-Perkins, Silvia Calvo, Garbiñe Ayensa, Pedro Montero (Intecmar)  
Sara Cloux, José Antonio Moares, Vicente Pérez-Muñuzuri (USC)  
Hilda de Pablo, Ramiro Neves (IST)





Looking for  
Pilled-Up  
Zones

# Several approaches



Citizen Science



Professional surveyors



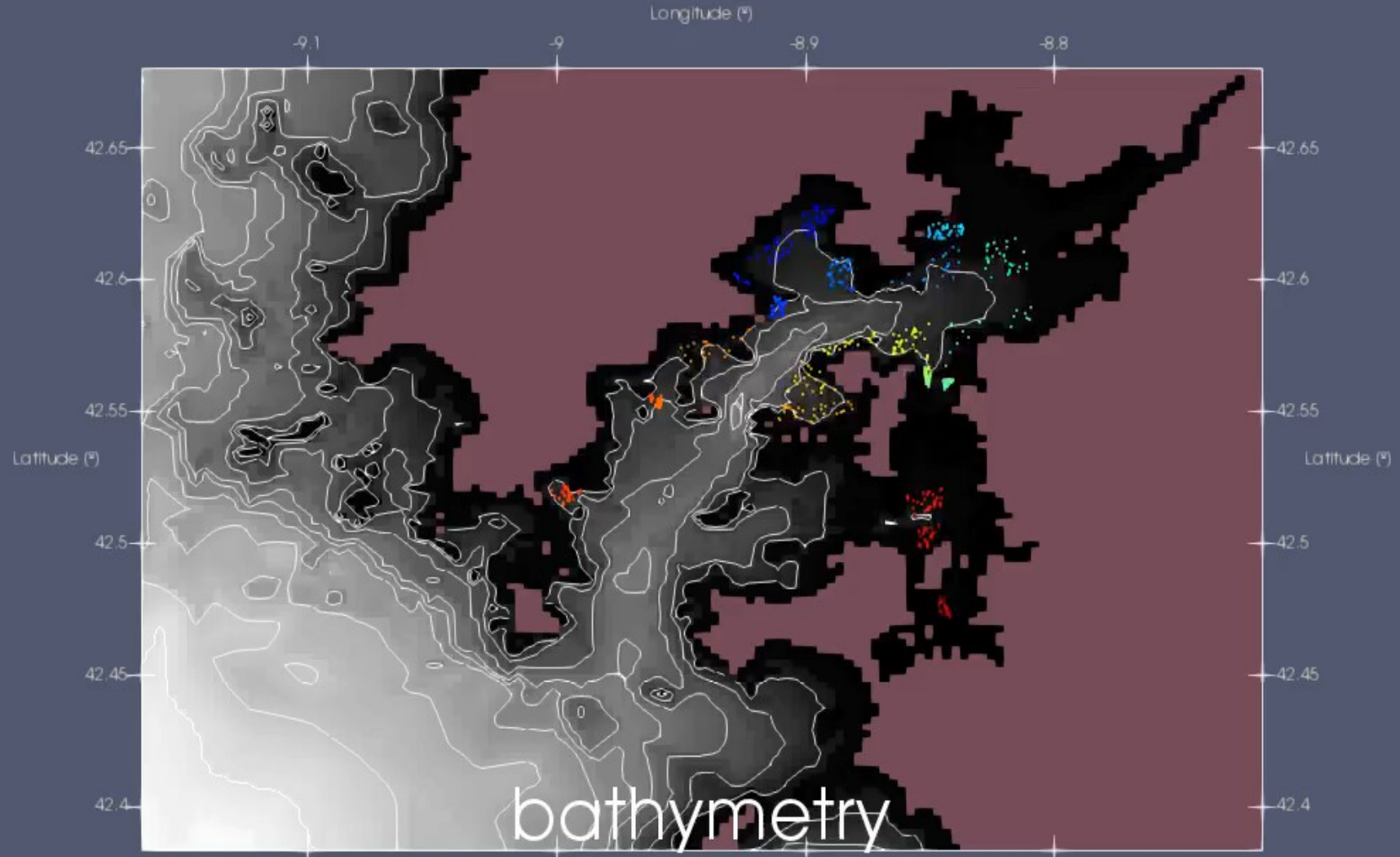
Numerical Models



Drones

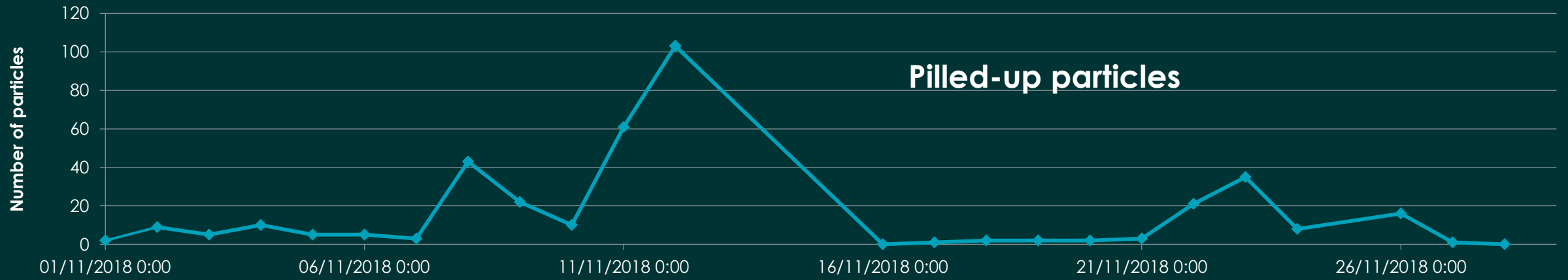
Day: 0.00

# Numerical Models

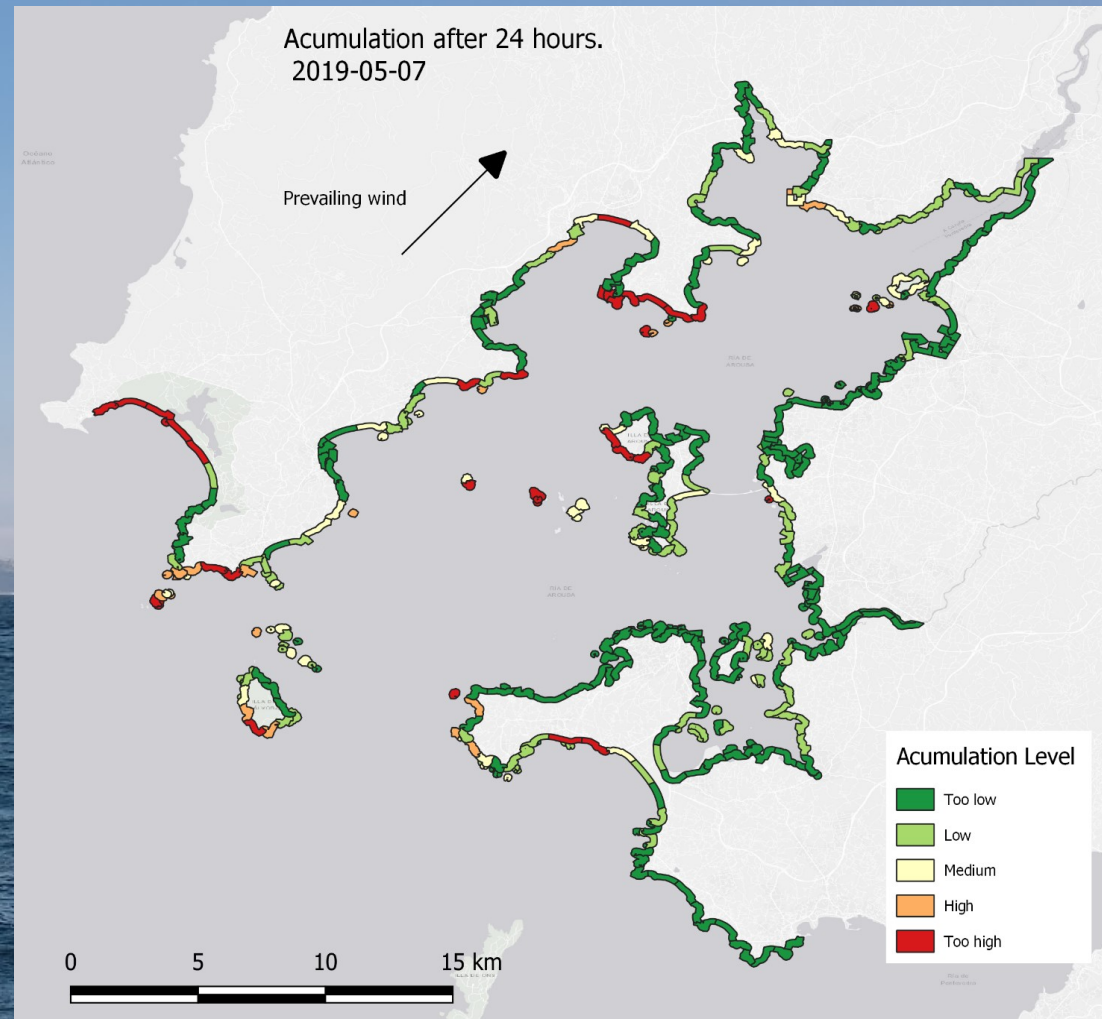
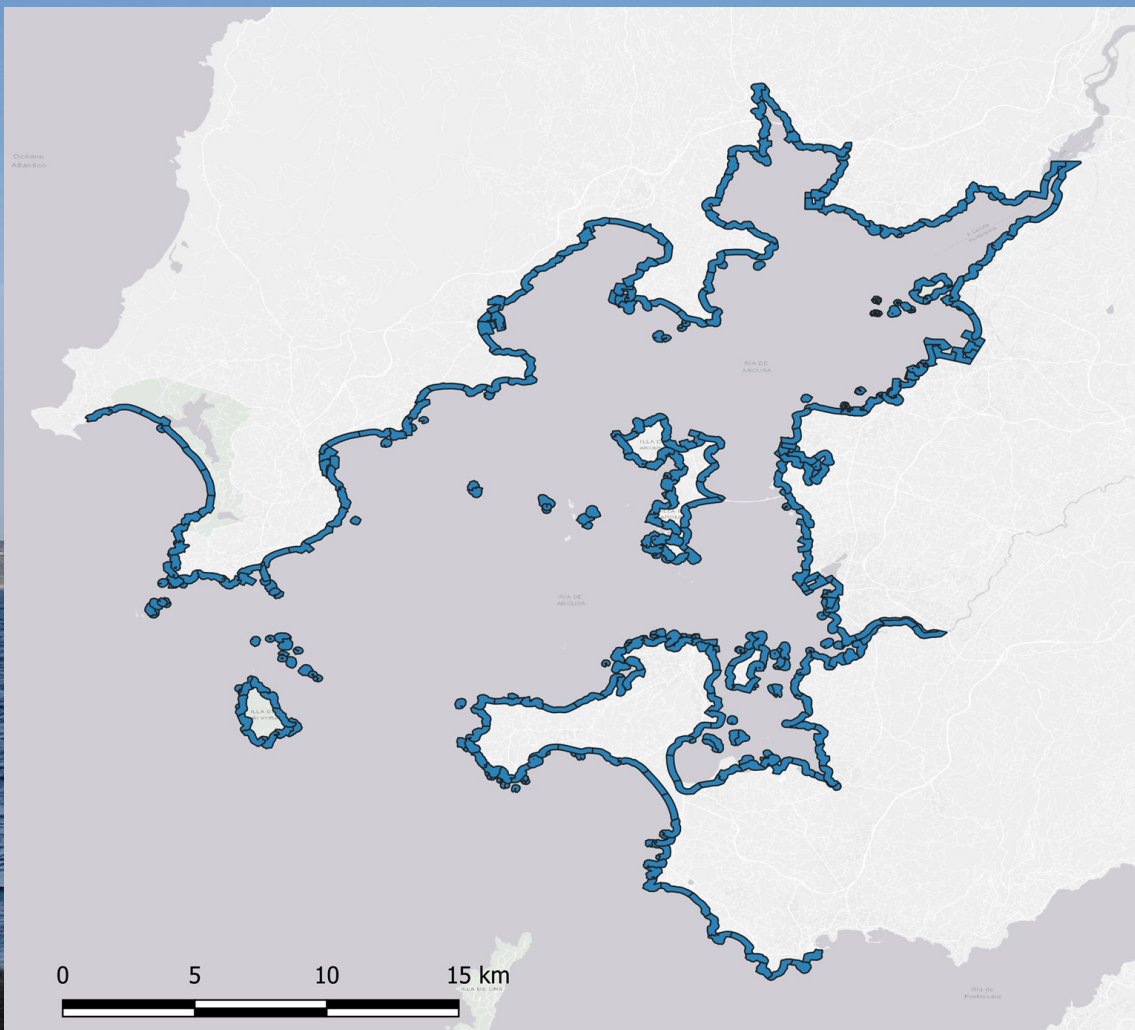


1.0 50. 134.6  
Longitude (°)



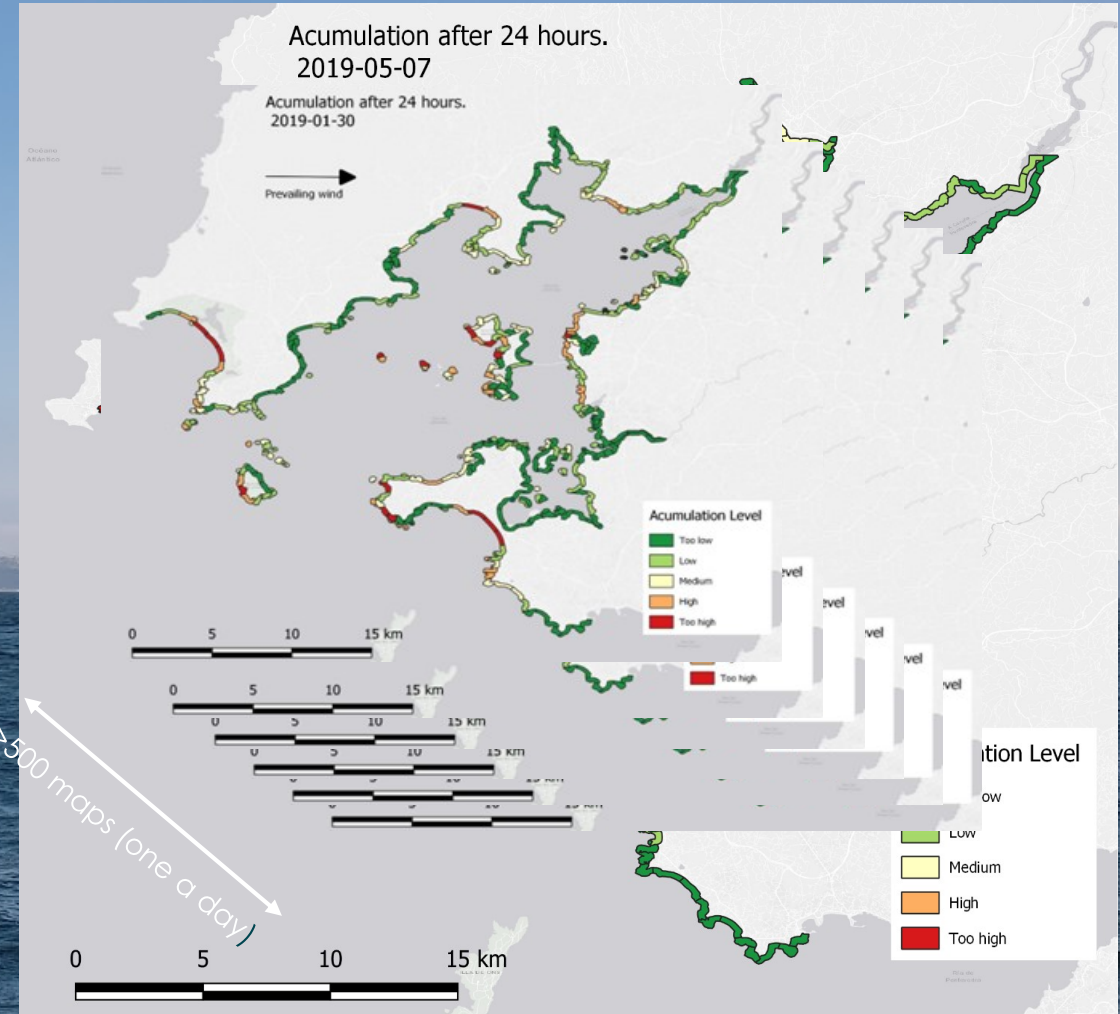
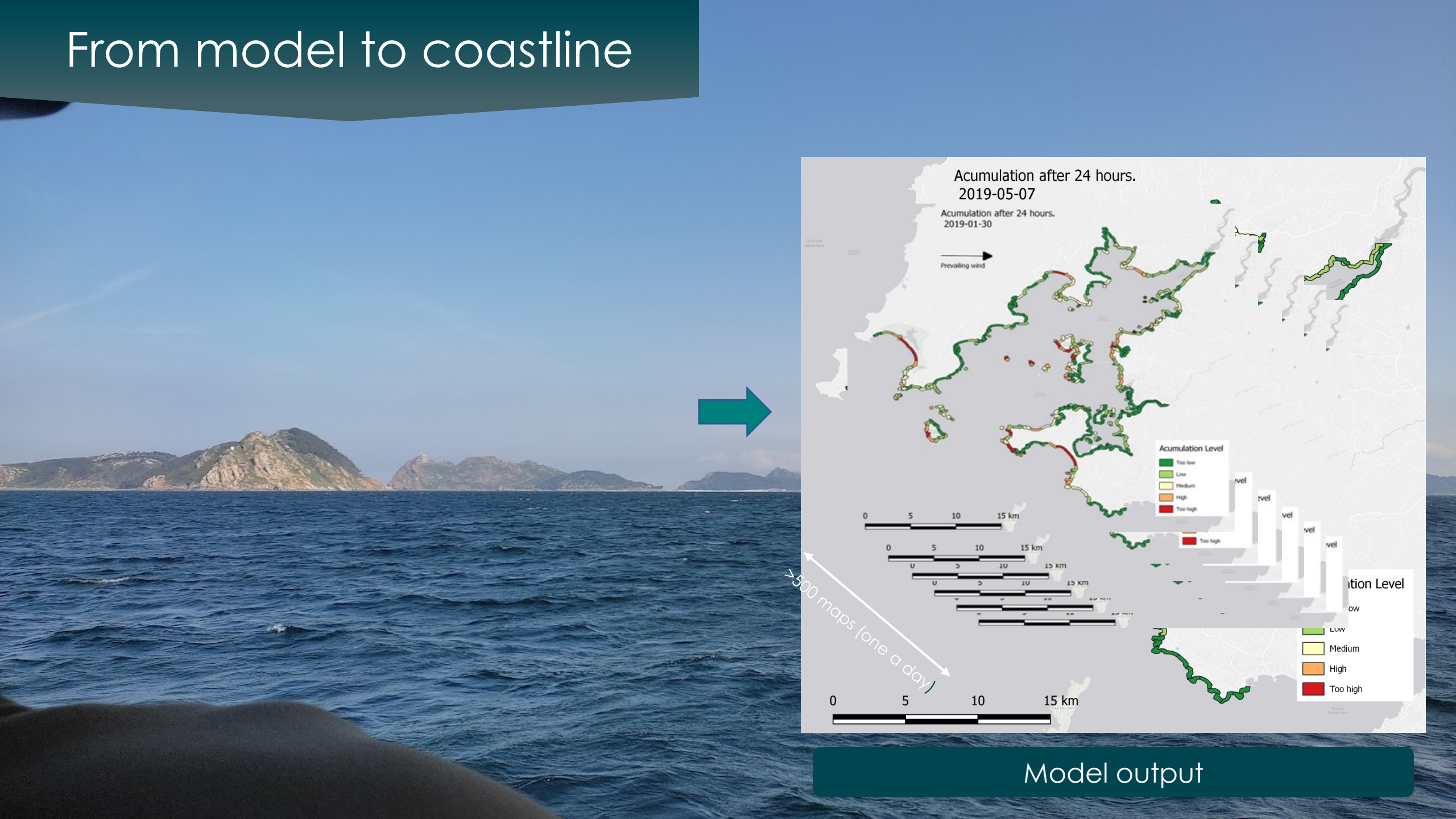


# From model to coastline



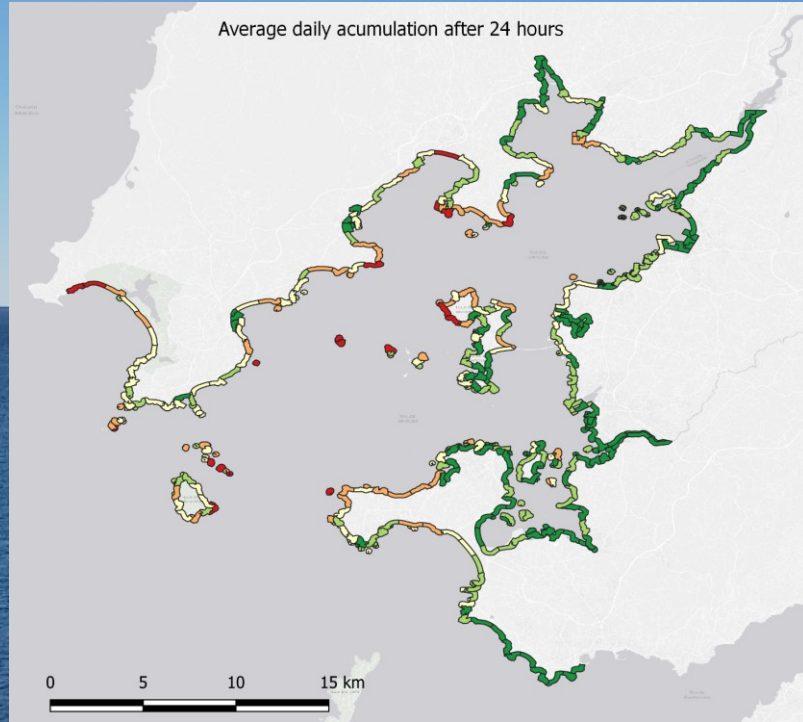
Model output

# From model to coastline

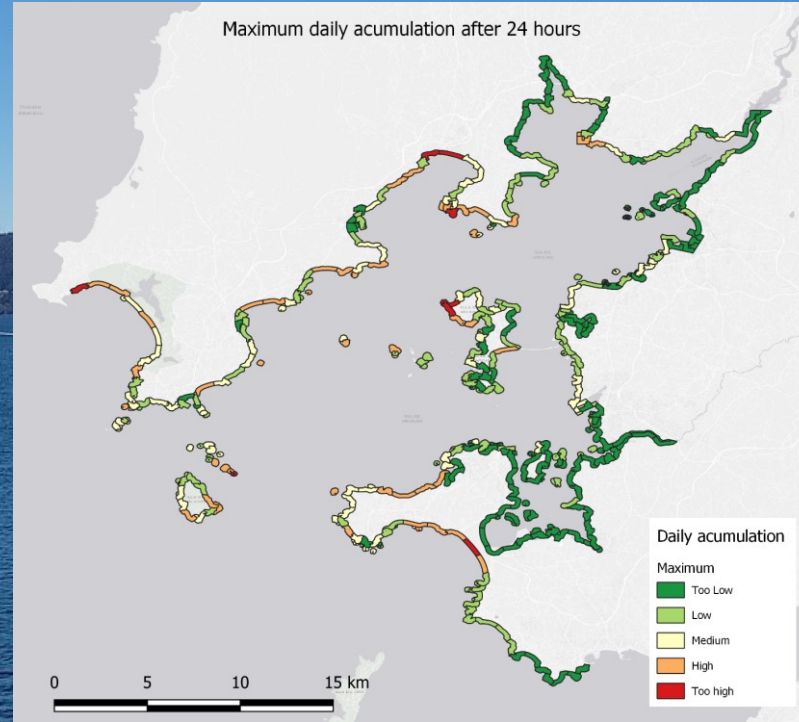


Model output

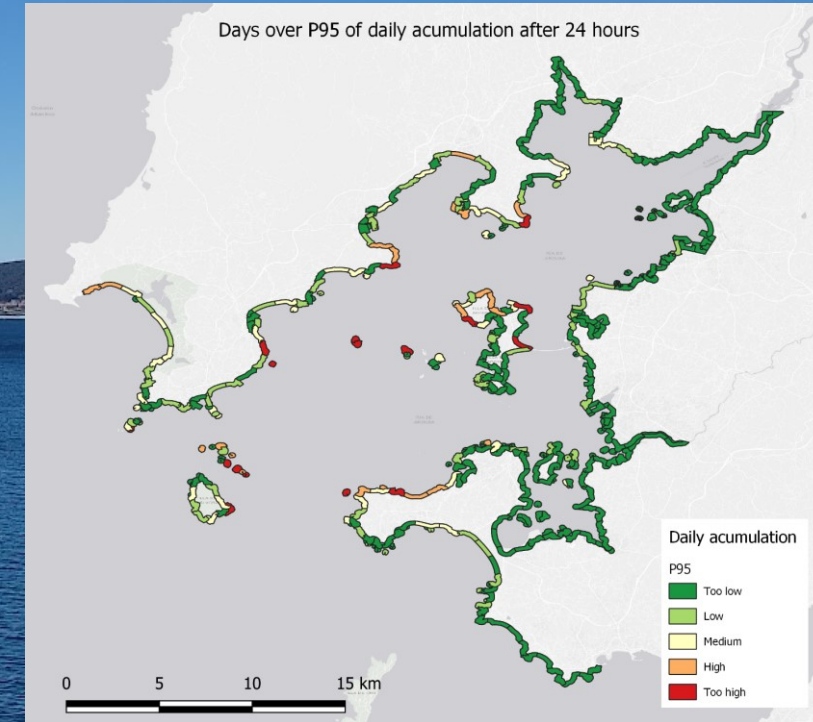
# From models to information



Average



Maximum













Days over P95



2019-01-15

Wind 

Beached Partides

	0 - 5
	5 - 10
	10 - 10
	10 - 20
	20 - 30
	30 - 40
	40 - 50
	50 - 60
	60 - 80
	80 - 1000



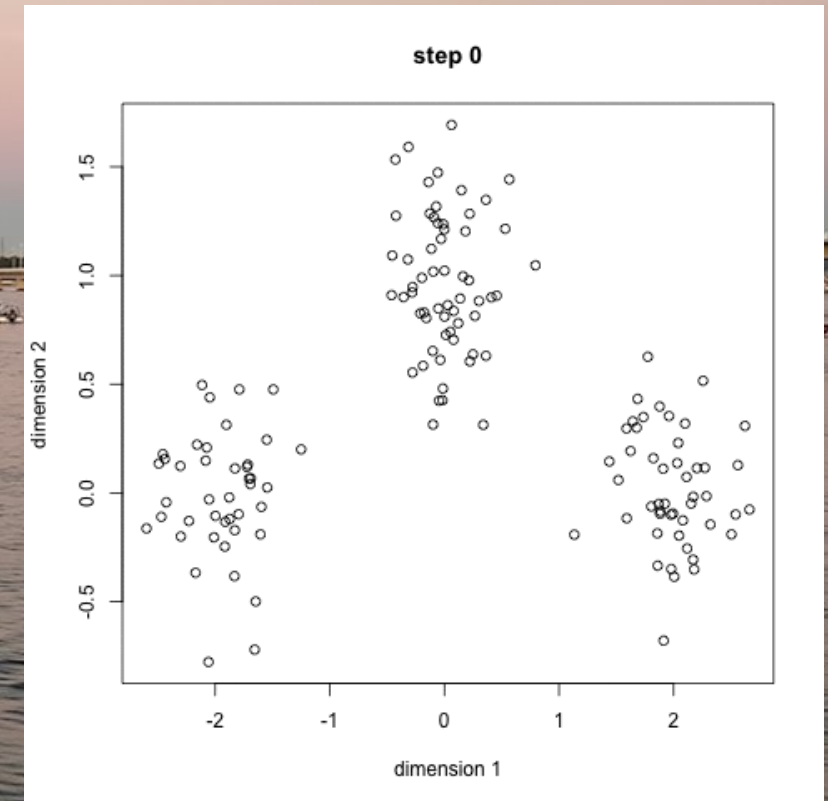
# Clustering

**K-means algorithm:** method to automatically cluster similar data together.

**Training set: Daily accumulation maps**

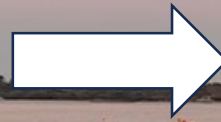
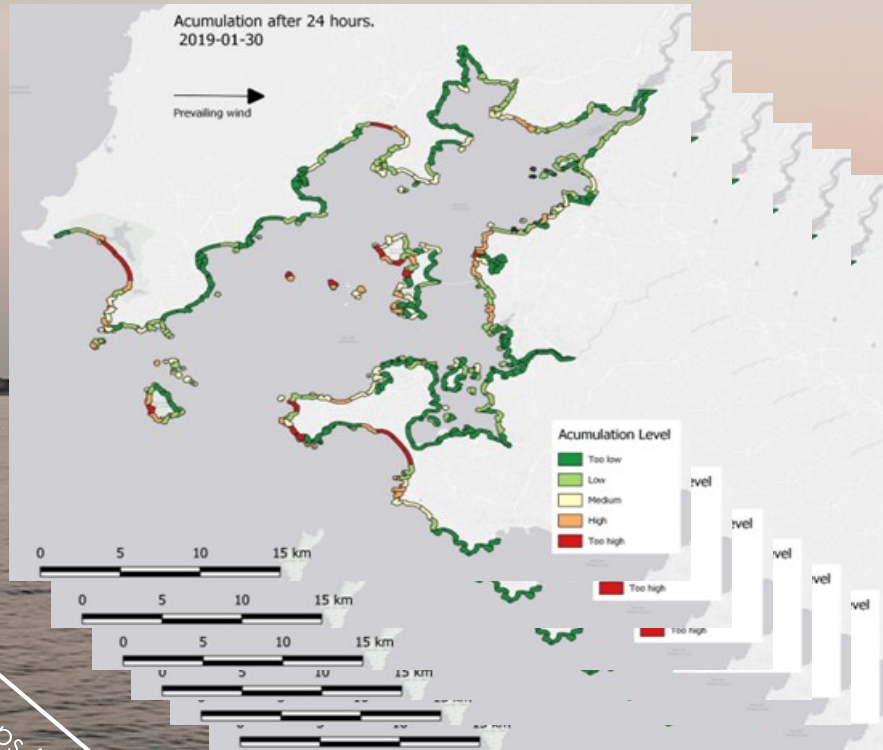
**Steps:**

- 1) Chose number of clusters (K)
- 2) Seed initial centroids
- 3) Iterative computing:
  - 1) Assigning elements to the closest centroid
  - 2) Recomputing the new centroids

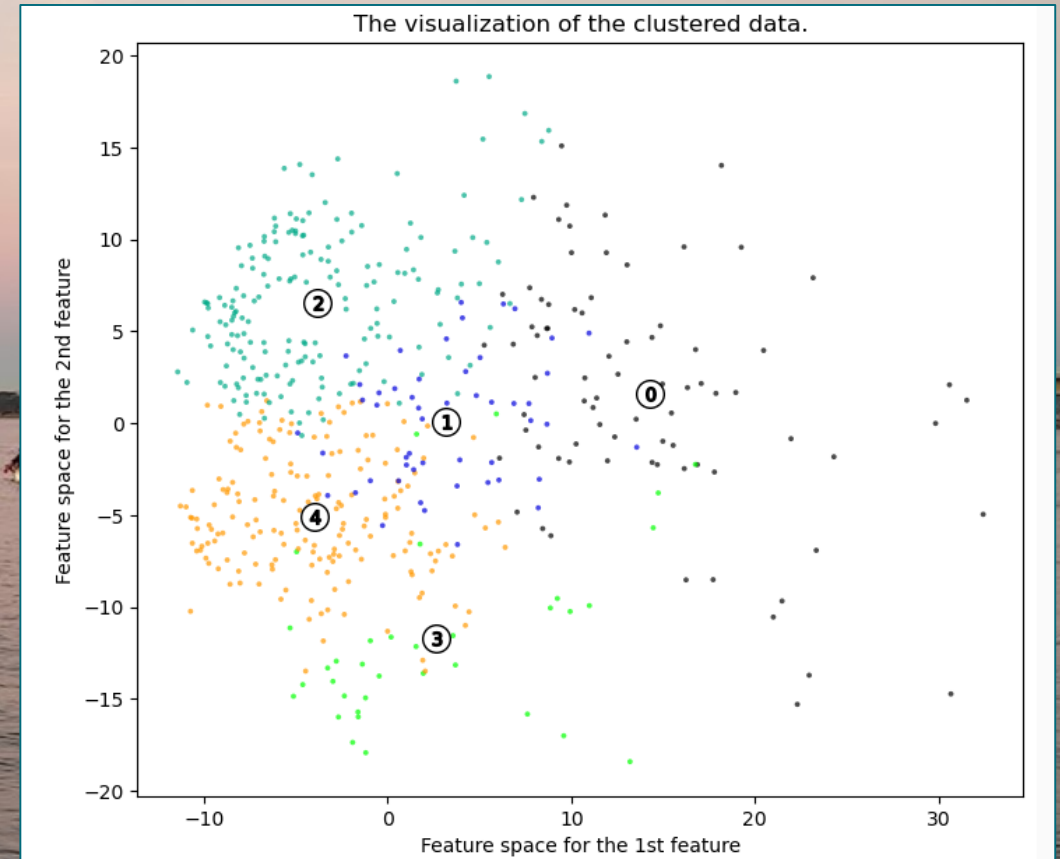


# Clustering

K-means algorithm:



5 Clusters



# Clustering

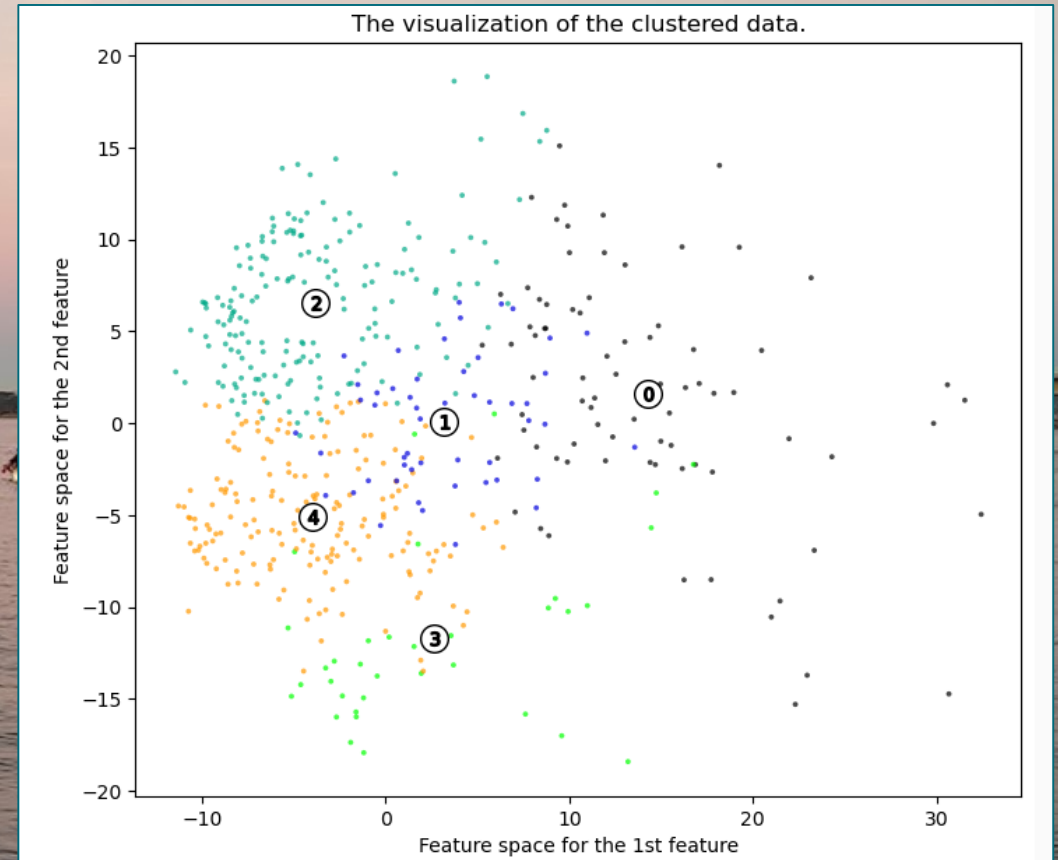
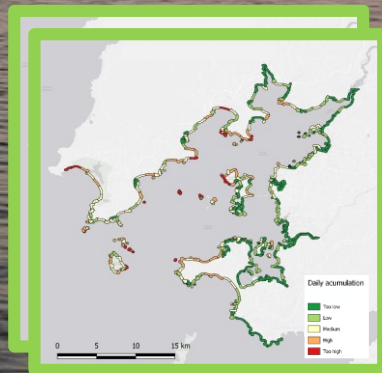
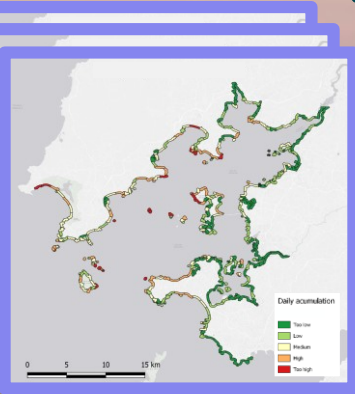
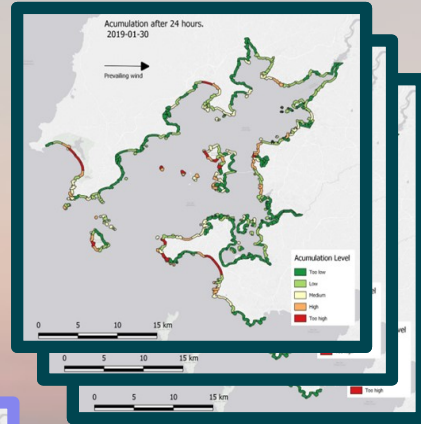
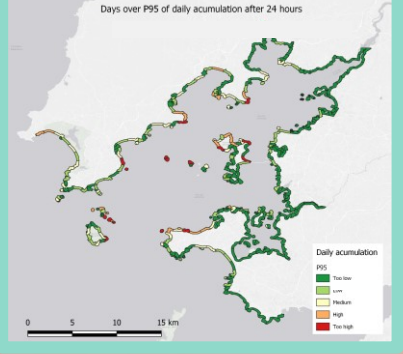
## 5 Clusters

179

54

79

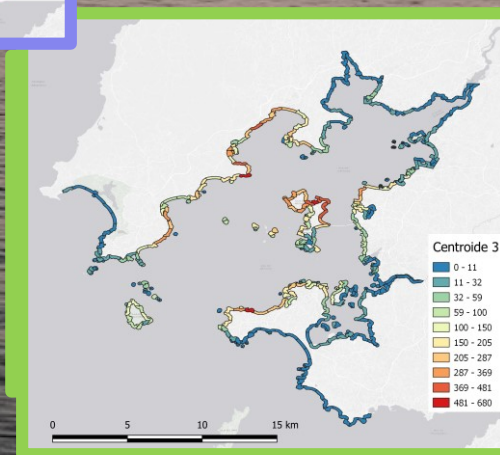
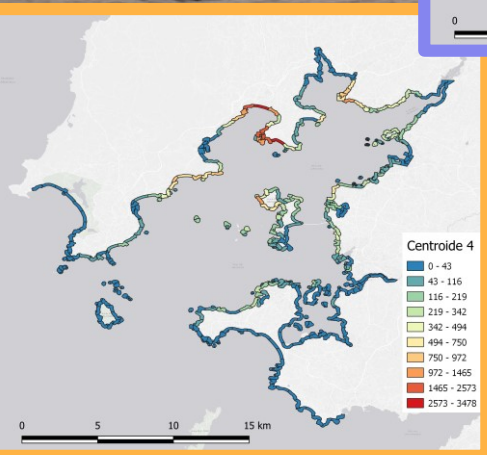
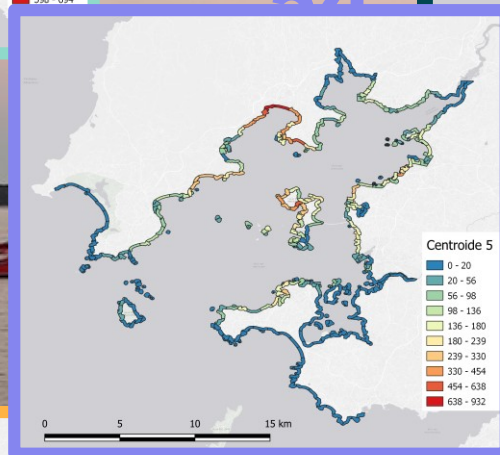
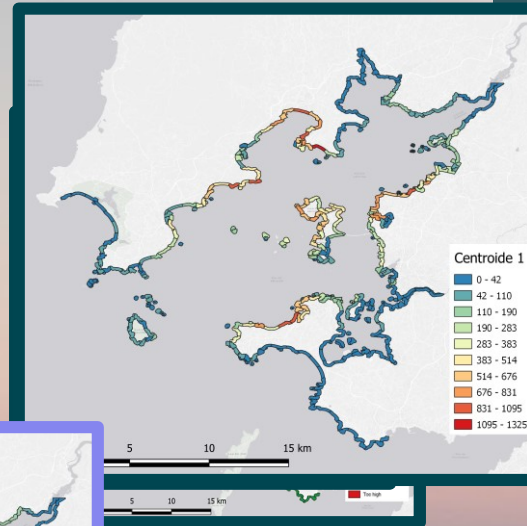
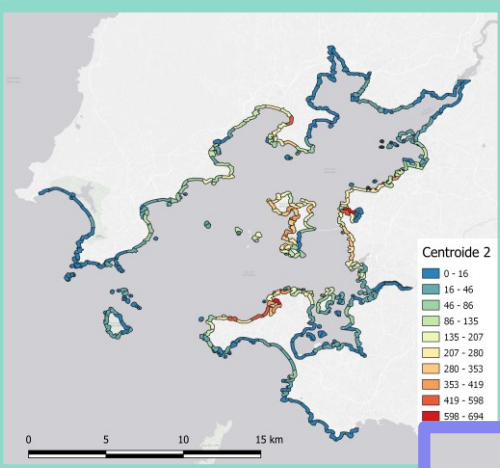
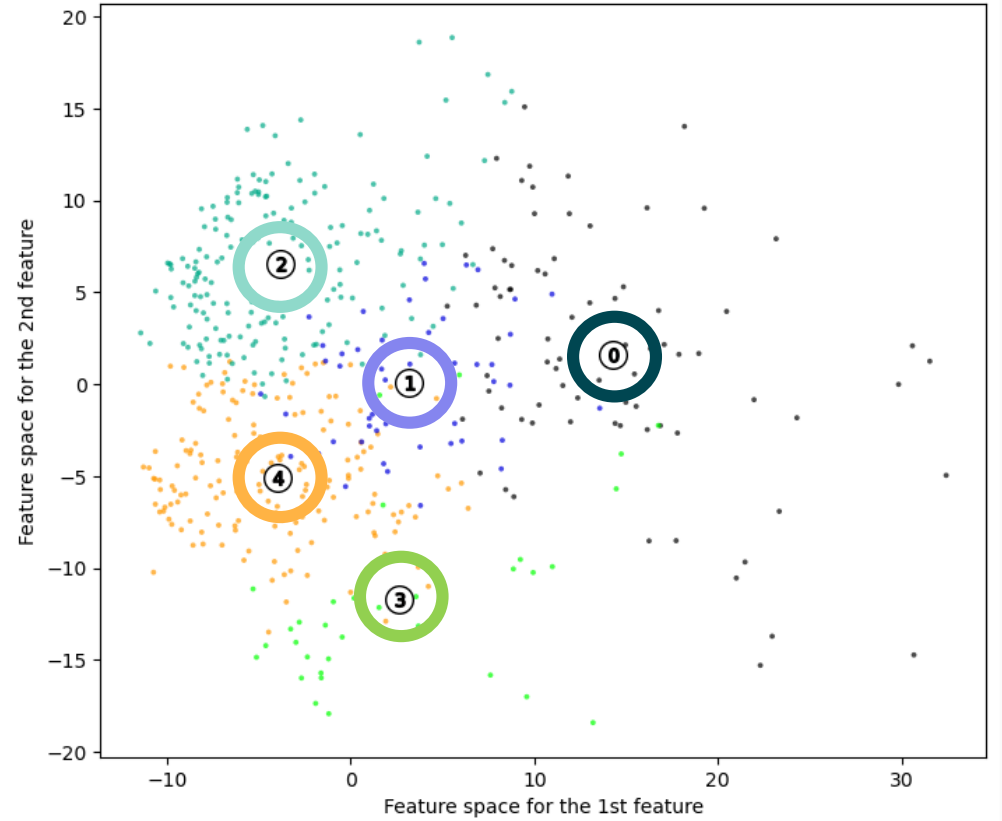
35



# Typical situations:

**Centroids** are representatives of each group

The visualization of the clustered data.

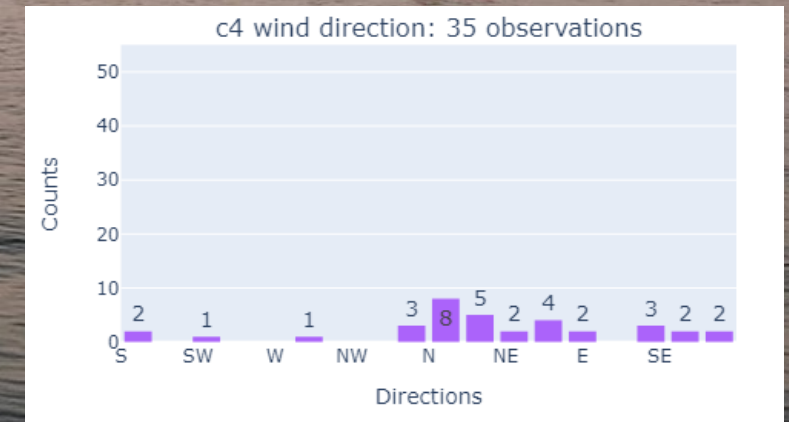
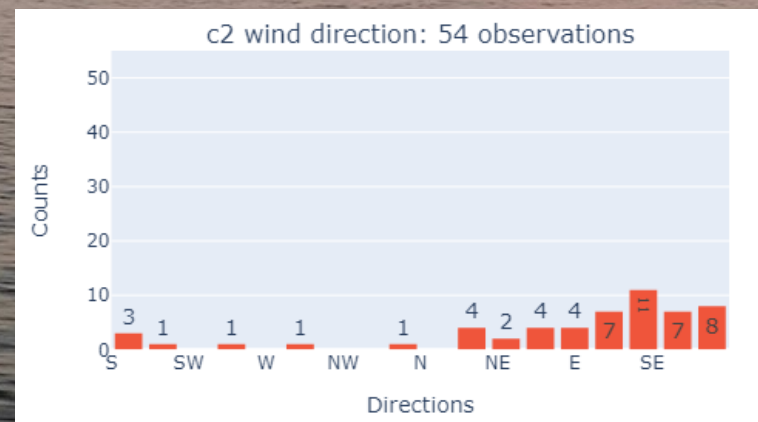
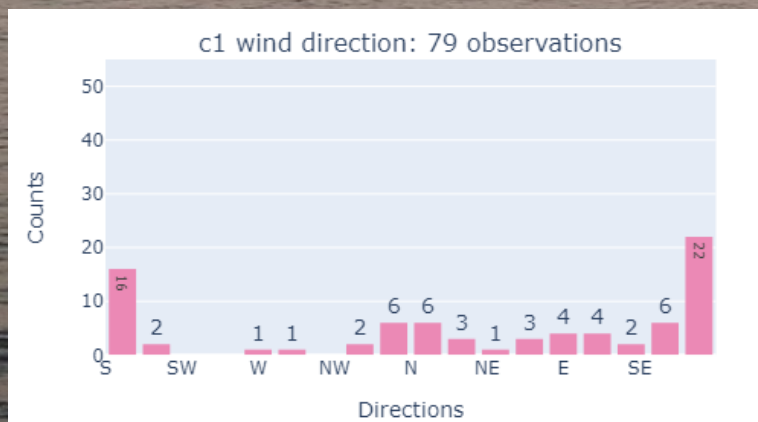
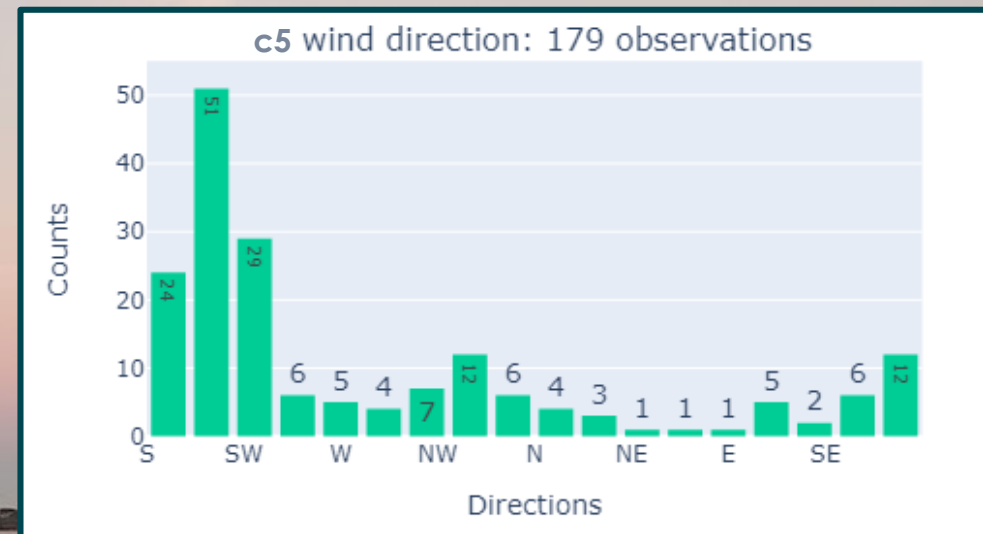
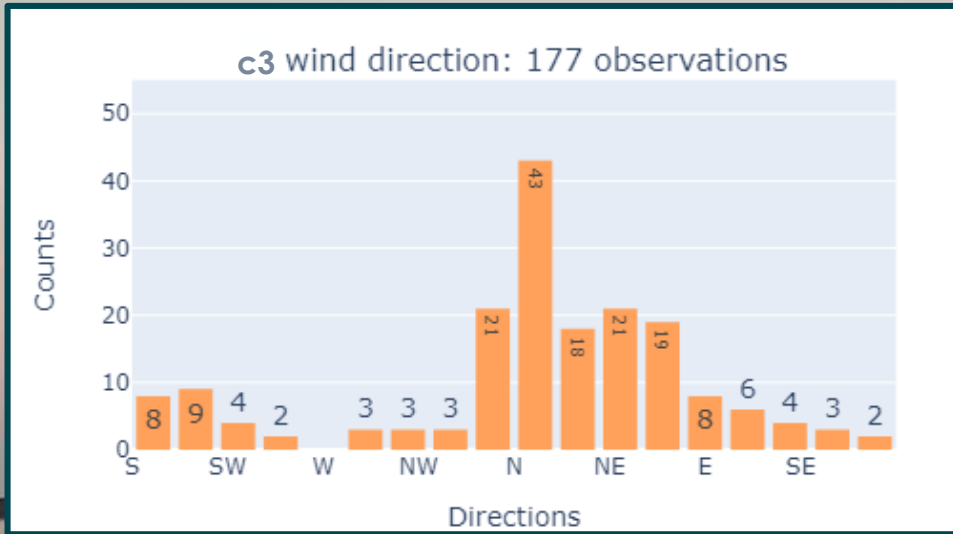


54

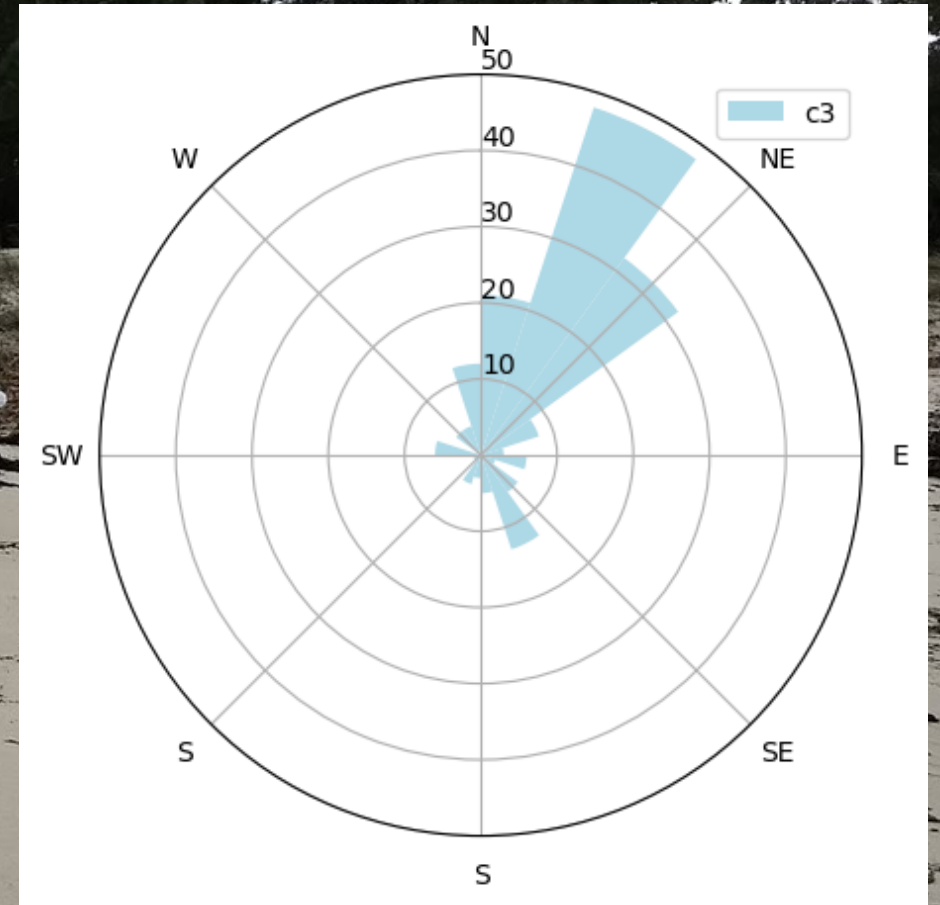
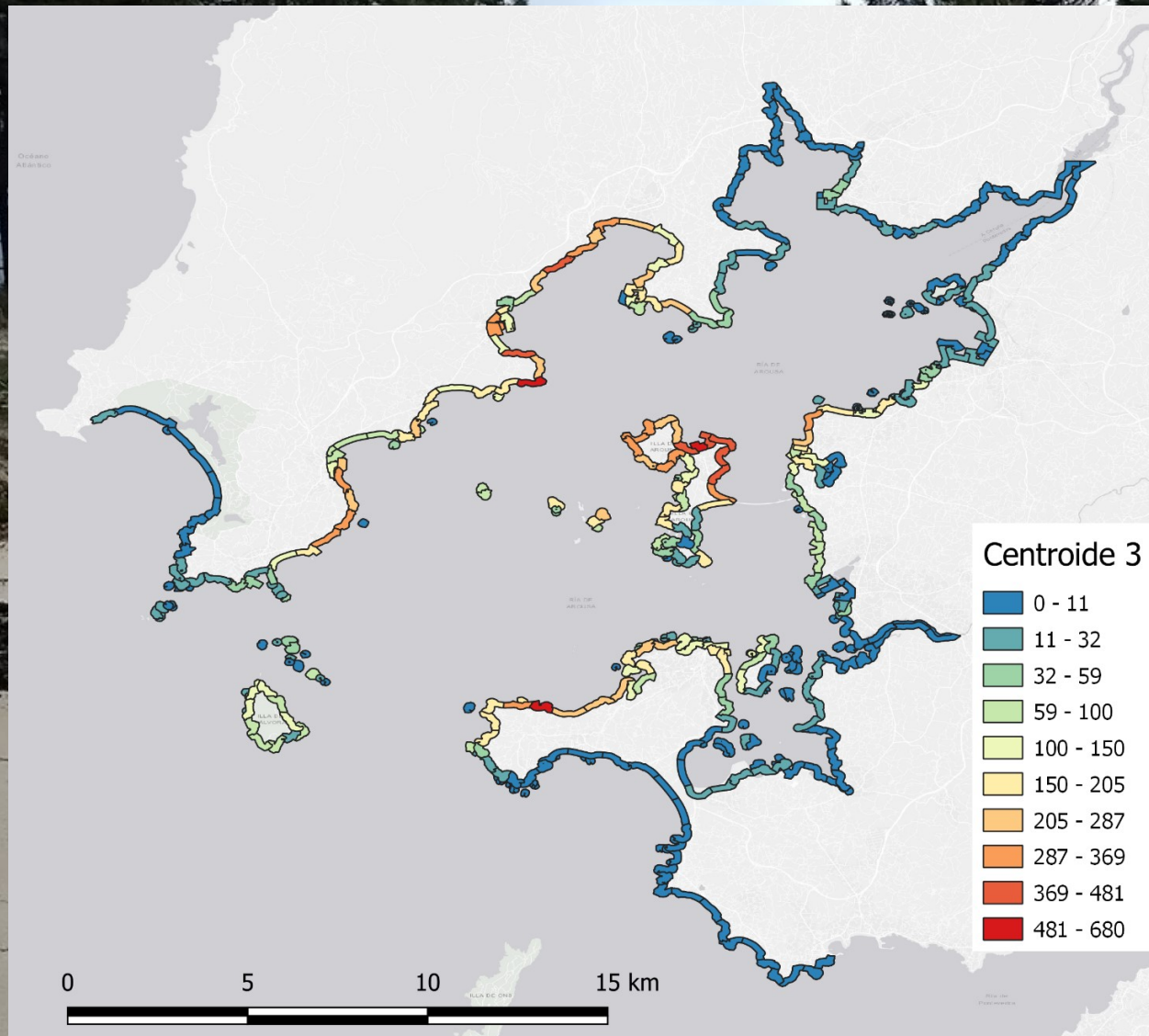
177



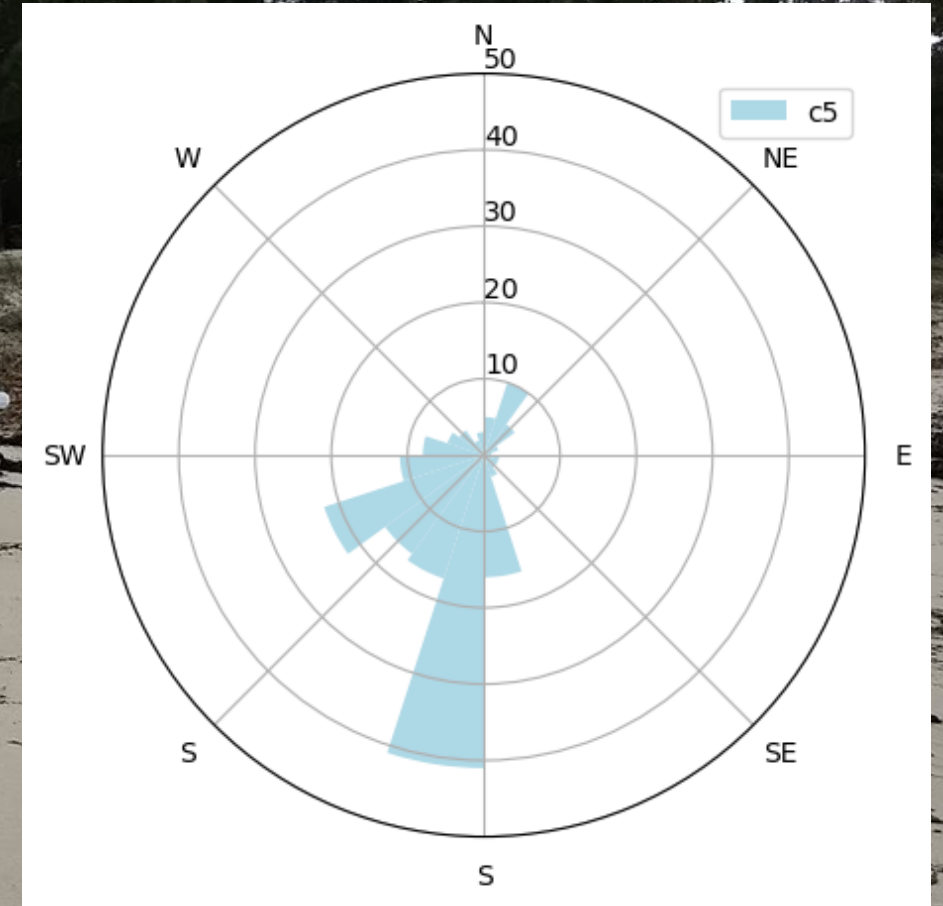
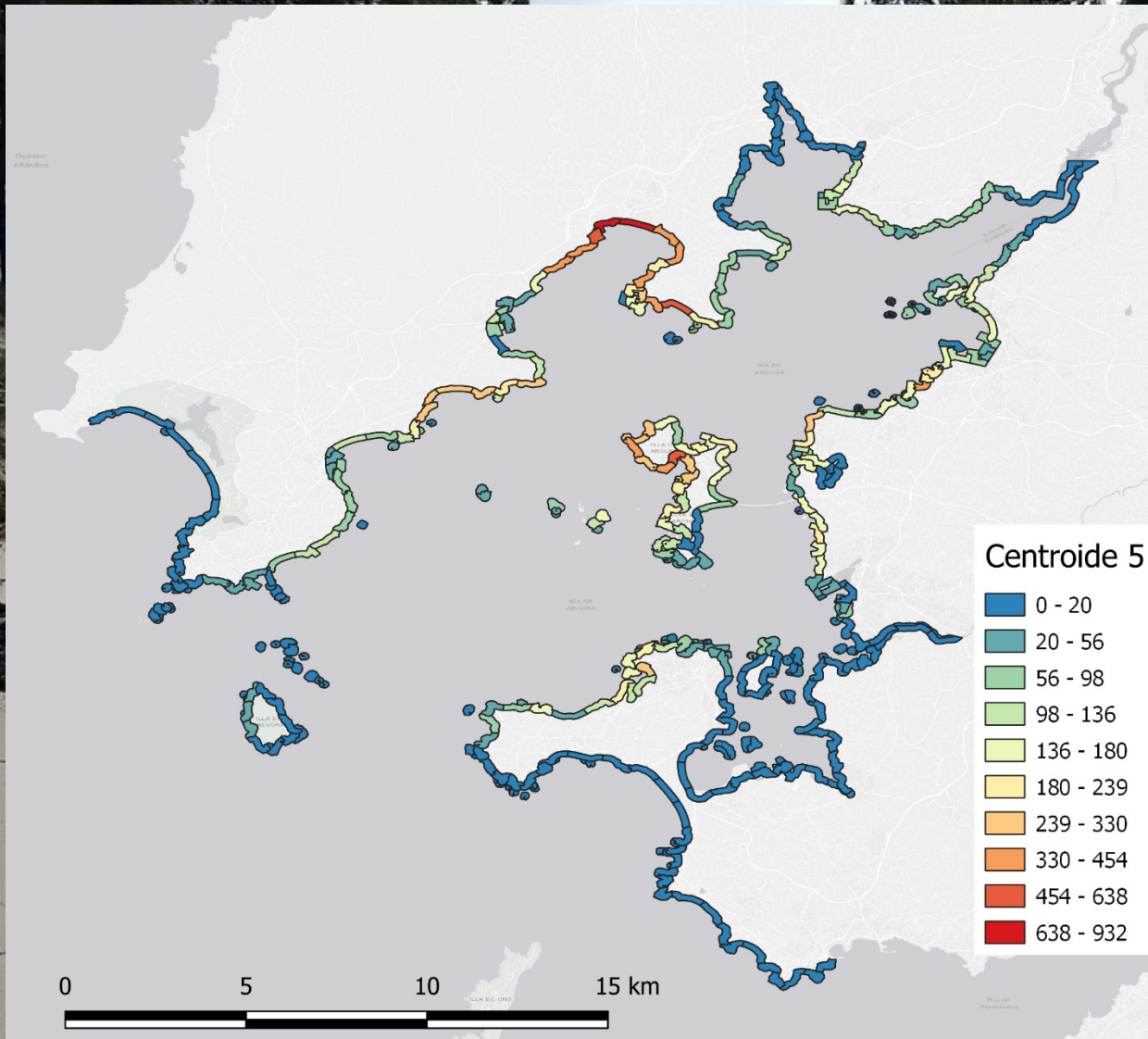
# Relationship between wind directions and groups



# Typical situation with wind from N-NE

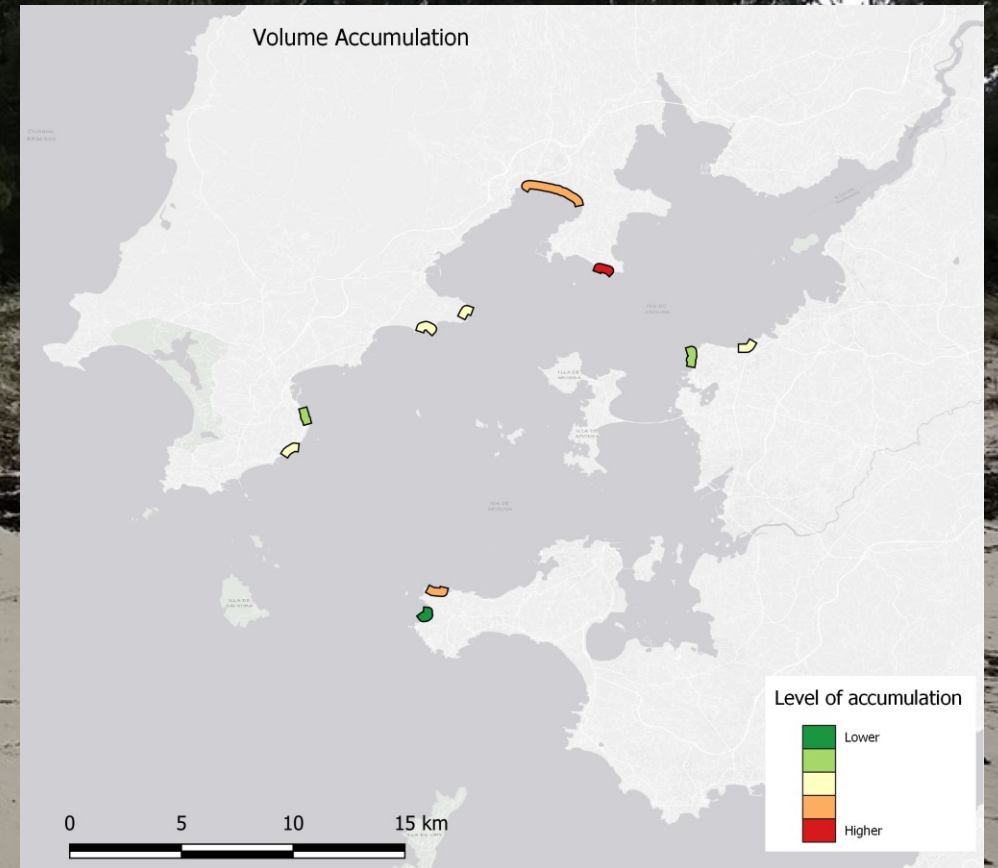
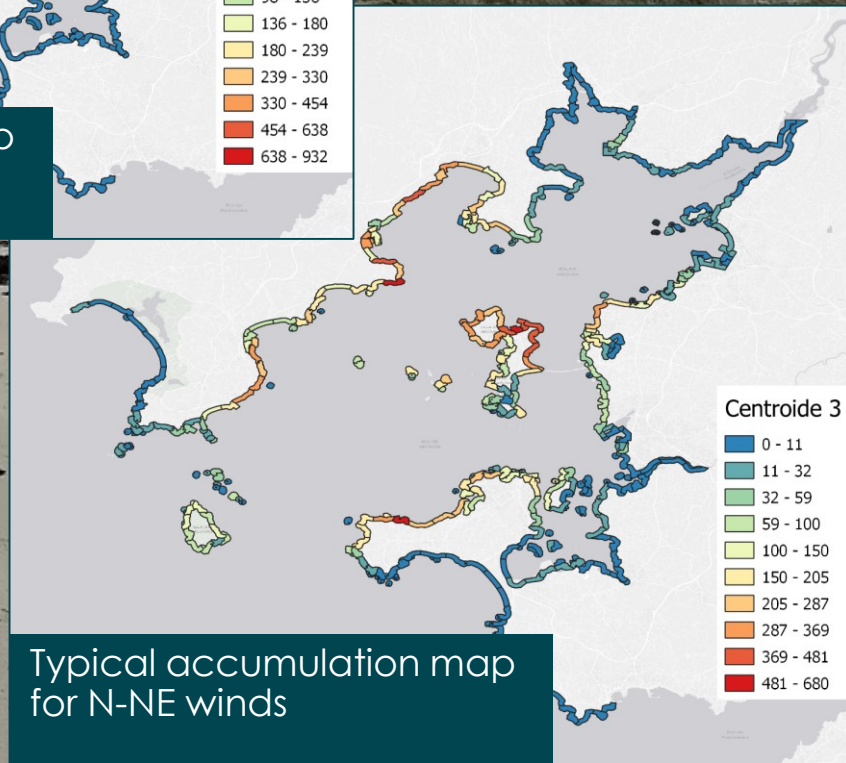
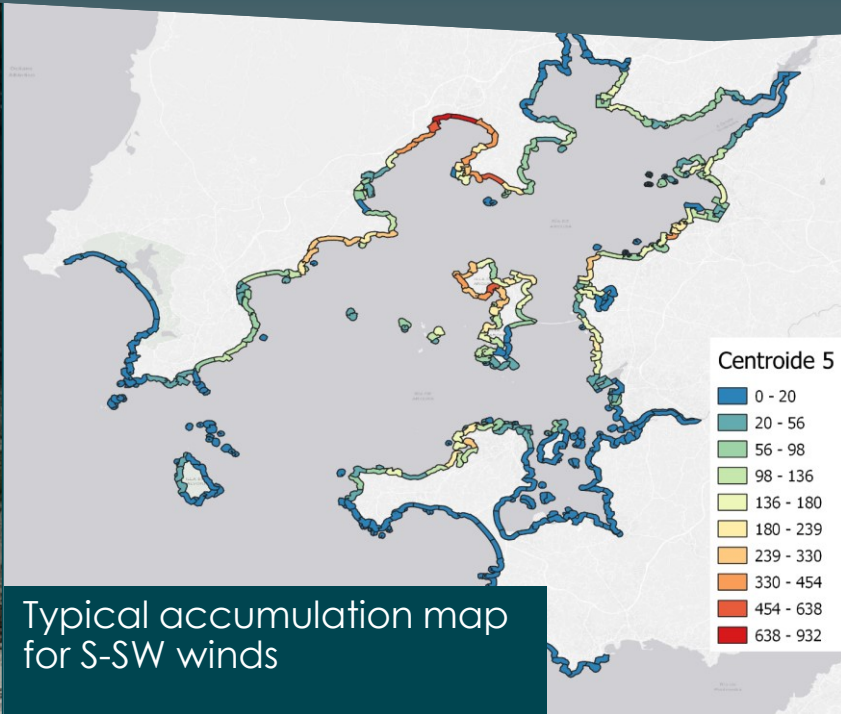


# Typical situation with wind from S-SW





# Typical situations vs Observations



# Helping to the management

## Investigan a un buque en Vigo por el sentinazo que esparció chapapote por A Illa

Faro de Vigo: 13-12-2022

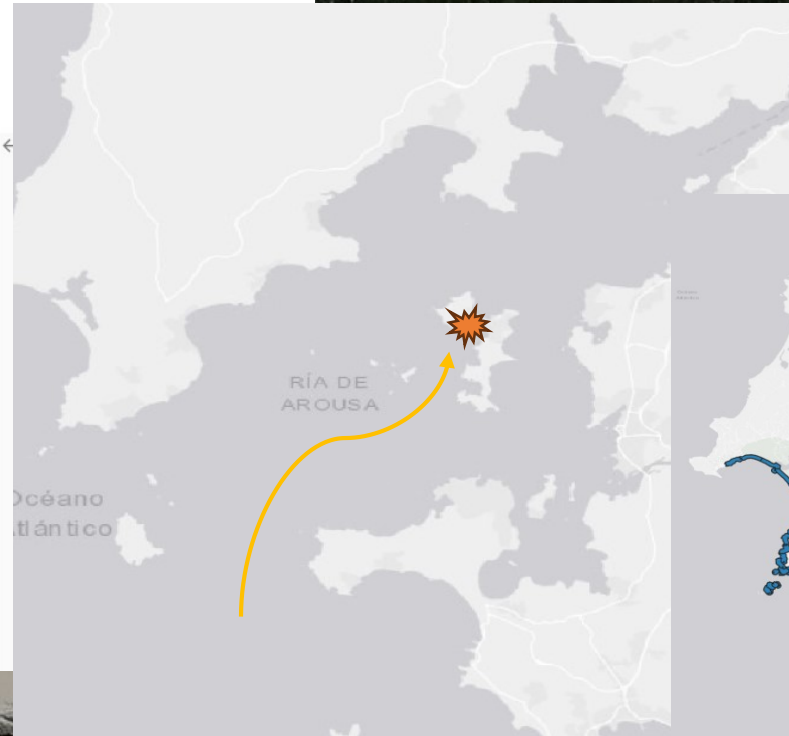
El buque permanece retenido por Capitanía Marítima

R. A. / A. O.

A Illa | 13-12-22 | 12:07 | Actualizado a las 20:14

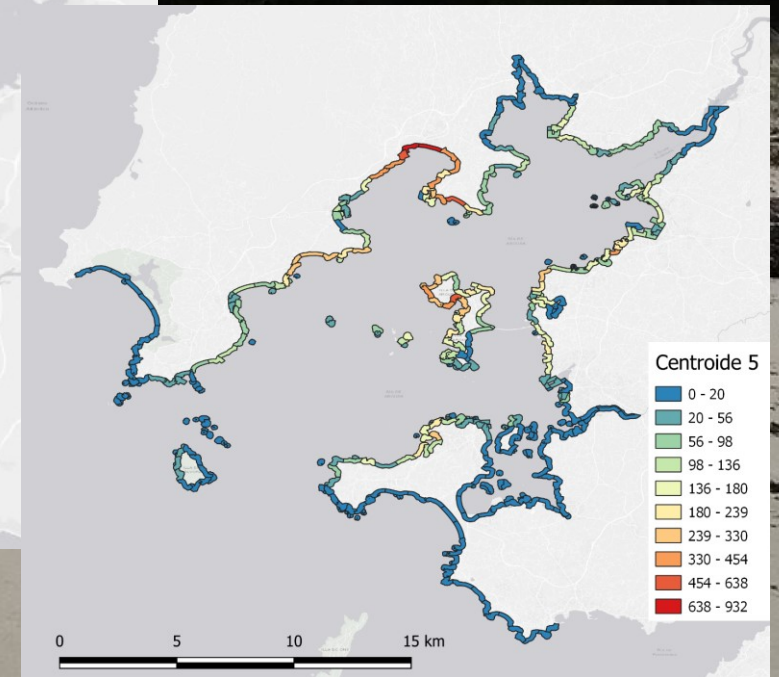


El fuel llegó mezclado con algas a la playa de O Campo. / NOÉ PARGA



First impact on coast:  
Praia do Campo

Current wind: S-SW



Typical accumulation  
map for S-SW winds

# THANK YOU!!!

Silvia Allen-Perkins, Silvia Calvo, Garbiñe Ayensa, Pedro Montero (Intecmar)  
Sara Cloux, José Antonio Moares, Vicente Pérez-Muñuzuri (USC)  
Hilda de Pablo, Ramiro Neves (IST)

[pmontero@intecmar.gal](mailto:pmontero@intecmar.gal)