

CleanAtlantic

Tackling Marine Litter
in the Atlantic Area

Marine Litter LOC-app

Annex: Data Base Schema

WP	5
ACTION	5.1
LAST UPDATED	27 /07 /2020
VERSION	1.0
AUTHORS	INTECMAR
PARTICIPANTS	INTECMAR

DISCLAIMER

This document covers activities implemented with the financial assistance of the INTERREG Atlantic Area. It only reflects the author's view, thus the Atlantic Area Programme authorities are not liable for any use that may be made of the information contained therein.

INDEX

ANNEX: DATA BASE SCHEMA	4
1. BACKGROUND	4
2. DATA BASE.....	4
3. CONTACT INFORMATION.....	5

Annex: Data Base Schema

1. BACKGROUND

In the framework of CleanAtlantic project, the Technological Institute for the Marine Environment Monitoring of Galicia (INTECMAR) developed the mobile application *Marine Litter LOC-app* with the objective of facilitate and homogenize data collection of marine litter piled-up areas along the coast.

Marine Litter LOC-app allows geolocalize the zones of accumulation, their characteristics and dimensions, add pictures and comments, as well as collect specific information about the marine litter. *Marine Litter LOC- app* was created with the purpose of being used during managed monitoring sessions where a coordinator (with the profile of Administrator) must previously choose those sector that will be monitored and must assign each sector to whom will collect data (with the profile of User).

Marine Litter LOC-app has three help manuals and an annex:

- Installation Manual.
- Administrator Manual .
- User Manual.
- Annex: Diagram of the data base (content in this document).

2. DATA BASE

The application administrator is the privileged user to perform the following tasks:

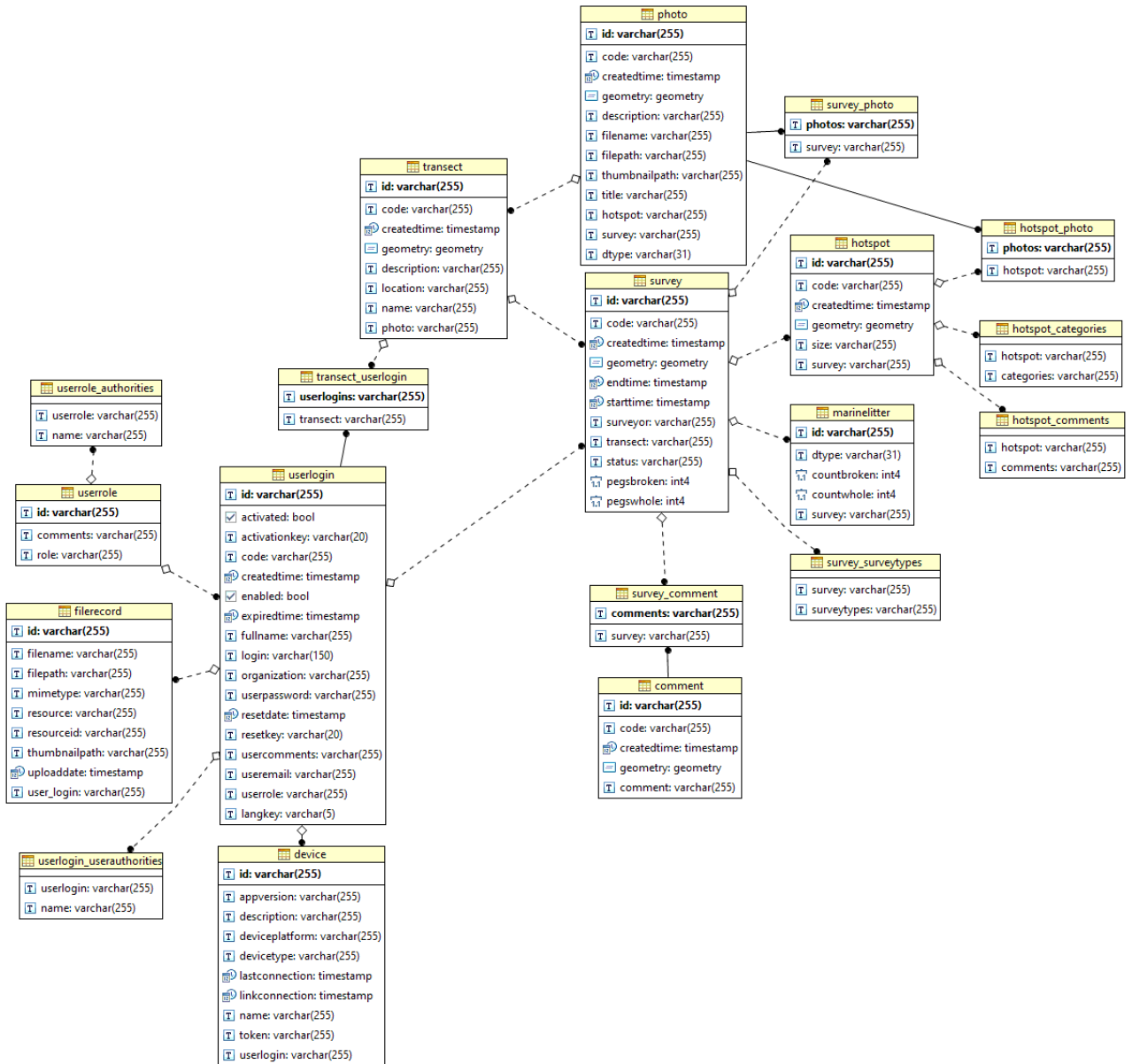
Marine Litter LOC-app stores the data of hotspots, segments and users in a PostgreSQL database, with the GIS plugin, PostGIS.

The following figure shows the Entity-Relation schema of the database. The Administrator should use the next three tables:

- userlogin: This table collects information from all users of the application.
- transect: each of the segments to be inspected.
- transect_userlogin: A table that relates users to transects.

1.

All other tables are managed by the application.



3. CONTACT INFORMATION

For further information, you can contact us through the following channels:

- **E-mail:** udac@intecmar.gal
- **Phone:** 986512320 Extensions 236/208
- **Web:** www.intecmar.gal; www.cleanatlantic.eu